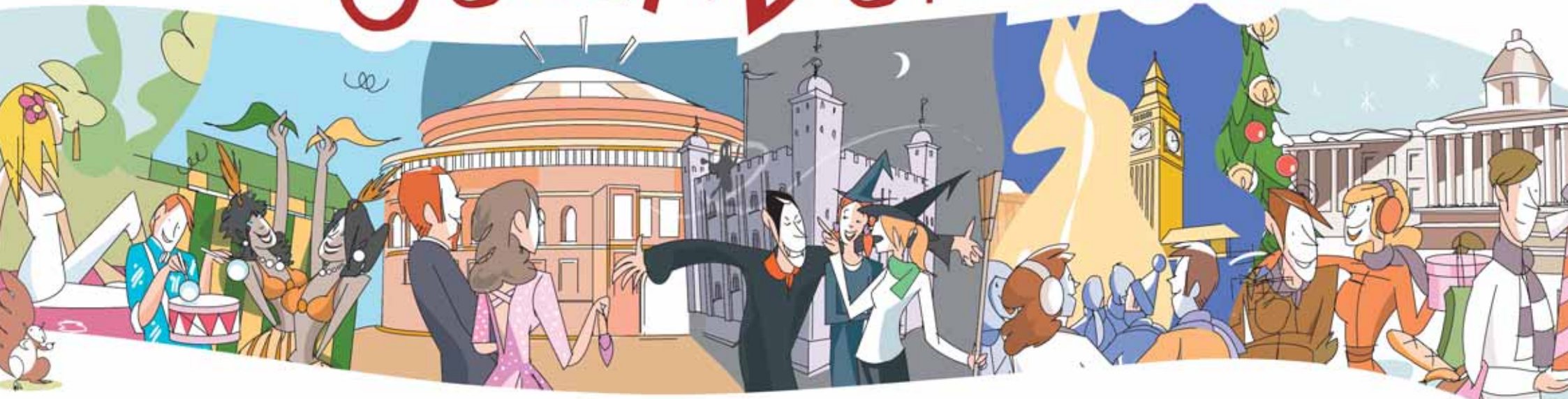




# A LONDON CALENDAR 2006

**LONDONTOWN**.com™



# CHINESE NEW YEAR



Chinese New Year in London is one of the most spectacular in the West with huge dancing lions and dragons and martial arts displays. Based in Soho, the main parade goes on to visit both Trafalgar and Leicester squares and features beautiful hand-crafted costumes and all manner of food and drink stalls.

This year's Chinese New Year festivities mark the beginning of 'China in London 2006' - a major season of events celebrating Chinese arts and culture.



## A London Calendar 2006 Booking Line

☎ 020 729 22 321

Hotels, Tickets and Tours

Open every day 8am to 11pm

English, Español, Français, Deutsch, Italiano

**LONDONTOWN.com**  
The London Experts



# January

YEAR OF THE DOG

**1<sup>st</sup> January**

## New Year's Day Parade

Parliament Square to  
Berkeley Square W1

**Phone:** 020 8566 8586

**Station:** Westminster Tube

**5<sup>th</sup> - 22<sup>nd</sup> January**

## Snooker: the Masters

Wembley Arena HA9

**Phone:** 0870 060 0870

**Station:** Wembley Park Tube/  
Rail

**5<sup>th</sup> - 29<sup>th</sup> January**

## Cirque Du Soleil: Alegria

Royal Albert Hall SW7

**Phone:** 020 7589 1444

**Station:** South Kensington  
Tube

**6<sup>th</sup> - 15<sup>th</sup> January**

## London International Boat Show

Excel Centre E16

**Phone:** 0115 912 9111

**Station:** Custom House DLR

**6<sup>th</sup> - 28<sup>th</sup> January**

## The Comedy of Errors, RSC

Novello Theatre W1

**Phone:** 020 7437 4370

**Station:** Charing Cross  
Tube/Rail

**14<sup>th</sup> January**

## Jamie Cullum

Carling Apollo

Hammersmith W6

**Phone:** 020 7437 4370

**Station:** Hammersmith Tube

**14<sup>th</sup> January**

## Russian Winter Festival

Trafalgar Square WC2

**Phone:** 020 7983 4000

**Station:** Charing Cross  
Tube/Rail

**20<sup>th</sup> January - 18<sup>th</sup> February**

## Nights at the Circus

Lyric Theatre W6

**Phone:** 0870 050 0511

**Station:** Hammersmith Tube

**29<sup>th</sup> - 30<sup>th</sup> January**

## The UK Wedding Show

Excel Centre E16

**Phone:** 01704 882 055

**Station:** Custom House DLR

**31<sup>st</sup> January - 26<sup>th</sup> February**

## Le Nozze di Figaro

The Royal Opera House WC2E

**Phone:** 020 7437 4370

**Station:** Covent Garden Tube

# SALES



## DEPARTMENT STORES

**Sale ends 8<sup>th</sup> January**

**Peter Jones**

Sloane Square SW1W

**Phone:** 020 7730 3434

**Station:** Sloane Square Tube

**Sale ends 31<sup>st</sup> January**

**Liberty**

210-220 Regent Street W1B

**Phone:** 020 7734 1234

**Station:** Oxford Circus Tube

## MENSWEAR

**Sale ends 31<sup>st</sup> January**

**Browns**

23-27 South Molton Street W1K

**Phone:** 020 7514 0038

**Station:** Bond Street Tube

**Sale ends 31<sup>st</sup> January**

**Paul Smith**

40-44 Floral Street WC2E

**Phone:** 020 7379 7133

**Station:** Covent Garden Tube

## WOMENSWEAR

**Sale ends 31<sup>st</sup> January**

**BirdCage**

8 Upper St Martin's Lane WC2H

**Phone:** 020 7240 0338

**Station:** Leicester Square

**Sale ends 31<sup>st</sup> January**

**Topshop**

36-38 Great Castle Street W1

**Phone:** 020 7656 7700

**Station:** Oxford Circus Tube

# SINATRA AT THE LONDON PALLADIUM

From 17<sup>th</sup> February

## Sinatra at the London Palladium

London Palladium  
Ole' Blue Eyes is back from the grave thanks to a bit of technological wizardry. Rare and unseen footage of Frank will be projected on to 20ft high moving screens as a 24-piece orchestra accompanies his legendary voice. There will be spectacular support from backing singers and dancing troupes to make this a show to remember. Once again you'll hear 'My Way', 'New York, New York' and the other timeless tunes. Sinatra first graced the boards of the Palladium back in 1950 – let's hope his renaissance is a lasting one.

**Phone:** 0870 998 8888

**Station:** Oxford Circus Tube

## A London Calendar 2006 Booking Line

☎ 020 729 22 321

**Hotels, Tickets and Tours**

Open every day 8am to 11pm

English, Español, Français, Deutsch, Italiano

**LONDONTOWN.com**  
The London Experts™

**4<sup>th</sup> February**  
**6 Nations Rugby,**  
**England vs Ireland**  
Twickenham TW1  
**Phone:** 0870 902 0000  
**Station:** Twickenham Rail

**12<sup>th</sup> - 16<sup>th</sup> February**  
**London Fashion**  
**Week**  
Venue to be confirmed  
**Phone:** 020 7636 7788

**15<sup>th</sup> February - 1<sup>st</sup> May**  
**Gothic Nightmares:**  
**Blake, Fuseli and**  
**the Romantic**  
**Imagination**  
Tate Britain SW1  
**Phone:** 020 7887 8000  
**Station:** Pimlico Tube

**22<sup>nd</sup> February - 21<sup>st</sup> May**  
**Americans in Paris,**  
**1860-1900**  
National Gallery WC2  
**Phone:** 020 7747 2885  
**Station:** Leicester Square Tube

**3<sup>rd</sup> - 28<sup>th</sup> February**  
**The Mikado**  
English National Opera WC2  
**Phone:** 020 7437 4370  
**Station:** Leicester Square Tube

**23<sup>rd</sup> February - 1<sup>st</sup> April**  
**The Cut**  
Donmar Warehouse WC2  
**Phone:** 020 7240 4882  
**Station:** Covent Garden Tube



**4<sup>th</sup> February - 5<sup>th</sup> March**  
**Orchid Festival**  
Kew Gardens TW9  
**Phone:** 020 8332 5655  
**Station:** Kew Gardens  
Tube/Rail

**19<sup>th</sup> - 20<sup>th</sup> February**  
**James Blunt**  
Carling Academy Brixton SW9  
**Phone:** 0870 998 8888  
**Station:** Brixton Tube/Rail

**7<sup>th</sup> - 8<sup>th</sup> February**  
**The Darkness**  
Alexandra Palace N22  
**Phone:** 020 7437 4370  
**Station:** Wood Green Tube

**25<sup>th</sup> - 26<sup>th</sup> February**  
**Xtreme Wheels**  
**International**  
Alexandra Palace N22  
**Phone:** 01242 268 980  
**Station:** Wood Green Tube

# VALENTINES Day

## AMOROUS ACTIVITIES

**Couples Chocolate-**  
**Making Workshop**  
myChocolate,  
41a Linden Gardens W2  
**Phone:** 020 7437 4370  
**Station:** Notting Hill Gate Tube

**Helicopter Tour**  
Biggin Hill Airport, Kent TN16  
**Phone:** 020 7437 4370  
**Station:** Bromley South Rail

## DREAMY DINING

**Babylon**  
99 Kensington High Street W8  
**Phone:** 020 7937 7994  
**Station:** High Street  
Kensington Tube

**Luxury Lunch Cruise**  
Woods River Cruises,  
Savoy Pier WC2  
**Phone:** 020 7437 4370  
**Station:** Charing Cross Tube/Rail

## LOVERS LONDON

**London Aquarium**  
County Hall,  
Westminster Bridge Road SE1  
**Phone:** 020 7437 4370  
**Station:** Westminster Tube

**London Eye**  
Jubilee Gardens SE1  
**Phone:** 0870 5000 600  
**Station:** Waterloo Tube/Rail

## ROMANTIC RETREATS

**The Royal Park Hotel**  
3 Westbourne Terrace W2  
**Phone:** 020 7437 4370  
**Station:** Lancaster Gate Tube

**Hazlitt's Hotel**  
6 Frith Street W1D  
**Phone:** 020 7437 4370  
**Station:** Tottenham Court  
Road Tube



**Opens 1<sup>st</sup> March**  
**Embers (starring**  
**Jeremy Irons)**  
 Duke of York's Theatre WC2  
**Phone:** 020 7437 4370  
**Station:** Leicester Square Tube

**2<sup>nd</sup> - 12<sup>th</sup> March**  
**London Australian**  
**Film Festival**  
 Barbican Arts Centre EC2  
**Phone:** 020 7638 8891  
**Station:** Barbican Tube

**2<sup>nd</sup> March - 29<sup>th</sup> May**  
**Searching for**  
**Shakespeare**  
 National Portrait Gallery WC2  
**Phone:** 020 7312 2463  
**Station:** Leicester Square Tube



**A London Calendar 2006**  
**Booking Line**  
 ☎ **020 729 22 321**  
**Hotels, Tickets and Tours**  
 Open every day 8am to 11pm  
 English, Español, Français, Deutsch, Italiano

**LONDON TOWN.com**  
**The London Experts**

**8<sup>th</sup> March - 2<sup>nd</sup> April**  
**The Ideal**  
**Home Show**  
 Earl's Court W14  
**Phone:** 0870 606 6080  
**Station:** Earl's Court Tube

**12<sup>th</sup> March**  
**St Patrick's Day**  
**Parade**  
 Hyde Park Corner W1  
**Phone:** 020 7983 4000  
**Station:** Hyde Park Corner Tube

**17<sup>th</sup> - 25<sup>th</sup> March**  
**Human Rights**  
**Watch International**  
**Film Festival**  
 Ritzy Cinema SW9 and venues  
 throughout London  
**Phone:** To be confirmed  
**Station:** Brixton Tube/Rail

# MARCH



## ST PATRICK'S DAY PARADE

London's Irish community has always celebrated St Patrick's Day in the traditional manner, with church services, music, dancing and plenty of Guinness and whiskey. Over recent years, London has also hosted a special celebratory parade rivalling those of New York and Chicago. There are floats from every Irish county, hundreds of stalls along the route and a musician's stage in Trafalgar Square. Keep an eye on where the real London Irish go after the parade and you're guaranteed a memorable evening.



## DAY TRIPS OUT OF LONDON

### Coach Tour to Leeds Castle

Visit this striking ancient castle and explore its rich history before tucking into cream tea with scones. Sitting serenely on an island, both the building and grounds are utterly exquisite.

**Phone:** 020 7437 4370

### Day Trip to Edinburgh

Zip up to Scotland for the day and visit the historic city of Edinburgh. Famous for its stately castle and ornate architecture, a stroll down the medieval cobbled streets is unforgettable.

**Phone:** 020 7437 4370

### Coach Tour to Oxford, Stratford and the Cotswolds

Pop into Oxford to admire the exquisite architecture, drive over the undulating hills of the Cotswolds and tread among Shakespeare's old haunts in Stratford-upon-Avon.

**Phone:** 020 7437 4370

### Day Trip to Paris

Travel by Eurostar and sample the romance of this wonderful capital. Sail down the Seine, visit the Louvre or dine on exquisite French cuisine.

**Phone:** 020 7437 4370

### Coach Tour to Bath and Stonehenge

Spend a memorable day visiting these historical gems. Explore the ancient monument of Stonehenge and the elegant Georgian terraces of Bath.

**Phone:** 020 7437 4370

**29<sup>th</sup> March - 12<sup>th</sup> April**  
**The London Lesbian**  
**and Gay Film Festival**  
 National Film Theatre SE8 and  
 venues throughout London  
**Phone:** 020 7255 1444  
**Station:** Southwark Tube

**30<sup>th</sup> March - 2<sup>nd</sup> April**  
**The Vitality Show**  
 Olympia W14  
**Phone:** 0870 220 4545  
**Station:** Olympia Tube/Rail

**31<sup>st</sup> March - 14<sup>th</sup> May**  
**Beck's Futures**  
 Institute of Contemp. Arts SW1  
**Phone:** 020 7930 3647  
**Station:** Charing Cross Tube/Rail

**20<sup>th</sup> - 24<sup>th</sup> March**  
**Alternative**  
**Fashion Week**  
 New Spitalfields Traders  
 Market E1  
**Phone:** 020 7375 0441  
**Station:** Liverpool Street Tube

**23<sup>rd</sup> March - 5<sup>th</sup> June**  
**Michelangelo**  
**Drawings**  
 The British Museum WC1  
**Phone:** 020 7323 8181  
**Station:** Tottenham Court  
 Road Tube

# APRIL

## EASTER

London is in full bloom over Easter as spring arrives in the capital. Seething with special events and activities, the city is buzzing with family fun. Join an egg hunt around a local beauty spot, gorge on chocolate goodies or take in the magnificence of some of London's finest churches at an Easter Day service.



### A London Calendar 2006 Booking Line

☎ 020 729 22 321

**Hotels, Tickets and Tours**

Open every day 8am to 11pm

English, Español, Français, Deutsch, Italiano

**LONDON TOWN**.com  
The London Experts

### CHURCH SERVICES

**16<sup>th</sup> April**

#### Westminster Abbey

Parliament Square SW1P

**Phone:** 020 7654 4900

**Station:** Westminster Tube

**16<sup>th</sup> April**

#### St Martin-in-the-Fields

Trafalgar Square WC2N

**Phone:** 020 7839 8362

**Station:** Charing Cross Tube/Rail

**16<sup>th</sup> April**

#### Westminster Cathedral

42 Francis Street SW1P

**Phone:** 020 7798 9055

**Station:** St James's Park Tube



### EASTER GIFTS

#### Rococo

321 King's Road SW3

**Phone:** 020 7259 9222

**Station:** Sloane Square Tube

#### The Chocolate Society

36 Elizabeth Street SW1

**Phone:** 020 7259 9222

**Station:** Sloane Square Tube

#### Choccywoccydoodah

47 Harrowby Street W1H

**Phone:** 020 7724 5465

**Station:** Marble Arch Tube

### EASTER EGG HUNTS

#### National Trust Easter Trail

Ham House, Ham Street TW16

**Phone:** 020 8940 1950

**Station:** Richmond Tube/Rail

#### Kenwood House

Kenwood Lakeside,

Hampstead Lane NW3

**Phone:** 020 8348 1286

**Station:** Hampstead Heath Rail

#### Chiswick House

Burlington Lane, Chiswick W4

**Phone:** 020 8995 0508

**Station:** Chiswick Rail

**2<sup>nd</sup> April**

### The Boat Race

The Thames – Putney to Mortlake

The world famous universities square off in this rowing race which inaugurates the summer season in London. This will be the 151st annual Boat Race and Cambridge currently lead by 78-72 (there was a controversial dead heat in 1877). It's a spectacular display of strength and teamwork, and thousands of fans line the banks of the river to roar their encouragement. It also has millions of television viewers worldwide. With first-rate oarsmen in each boat competition should be closer than ever.

**Station:** Hammersmith Tube



**6<sup>th</sup> April - 23<sup>rd</sup> July**

### Modernism: Designing a New World

Victoria & Albert Museum SW7

**Phone:** 020 7942 2000

**Station:** South Kensington Tube

**7<sup>th</sup> April**

### The Homes and Property Show

Business Design Centre N1

**Phone:** 020 8948 1666

**Station:** Angel Tube

**2<sup>nd</sup> - 3<sup>rd</sup> April**

### Depeche Mode

Wembley Arena HA9

**Phone:** 020 7437 4370

**Station:** Wembley Park Tube

**5<sup>th</sup> April**

### An Evening with Bill Bryson

Royal Geographical Society SW7

**Phone:** 020 7253 3500

**Station:** South Kensington Tube

**17<sup>th</sup> April**

### London Harness Horse Parade

Battersea Park SW11

**Phone:** 01737 350 052

**Station:** Battersea Park Rail

**21<sup>st</sup> April**

### The Kaiser Chiefs

Alexandra Palace N22

**Phone:** 020 7437 4370

**Station:** Wood Green Tube

**23<sup>rd</sup> April**

### The London Marathon

Greenwich Park to The Mall SW1

**Phone:** 020 7902 0200

**Station:** Charing Cross Tube/Rail

**23<sup>rd</sup> April**

### St George's Day Celebrations

Trafalgar Square WC2

**Phone:** 020 7983 4000

**Station:** Leicester Square Tube

**27<sup>th</sup> - 29<sup>th</sup> April**

### The London Golf Show

ExCel Centre

**Phone:** 020 7793 9611

**Station:** Custom House DLR

**Opening Date to be Confirmed**

### Zorro, the Musical

West End Venue TBC

**Station:** Leicester Square Tube

**Phone:** 020 7437 4370

# CHelsea FLOWER SHOW

23<sup>rd</sup> - 27<sup>th</sup> May 2006

## Chelsea Flower Show

Royal Hospital, Chelsea SW3

Founded in 1913, the Chelsea Flower Show is extraordinary - famous around the world as the premier event of its kind. The greatest exponents of imaginative garden design create a wonderland over an 11-acre site in Chelsea's Royal Hospital Gardens. It houses over 100 floral displays, from leading UK and international exhibitors. The annual event acts as a showcase for the world's most talented garden designers and show gardens at Chelsea are always special. Top designers from around the world apply to create gardens at the show and only the very best designs are selected. Always innovative and using styles and techniques from around the globe, these model gardens form the centrepiece of an astounding show. Most of London society, including the Queen, regards the Chelsea Flower Show as a highpoint of the London summer season, so if you get bored of the flowers you can have a great time celeb-spotting.

**Phone:** 0870 906 3781

**Station:** Sloane Square Tube

A London Calendar 2006

## Booking Line

☎ 020 729 22 321

**Hotels, Tickets and Tours**

Open every day 8am to 11pm

English, Español, Français, Deutsch, Italiano

**LONDONTOWN.com**  
The London Experts™

5<sup>th</sup> May - 8<sup>th</sup> October

## Shakespeare's Globe

New Globe Walk SE1

The reconstructed Globe Theatre in Southwark shows visitors how the Bard's plays would have been performed in Elizabethan times. It's also one of London's most romantic spots.

**Phone:** 020 7401 9919

**Station:** Southwark Tube

29<sup>th</sup> May - 9<sup>th</sup> September

## Regent's Park Open Air Theatre

Regent's Park NW1

London's largest open-air theatre is putting on a fabulous blend of shows this summer. From Shakespearean fantasy Midsummer Night's Dream, to kid's delight Babe the Sheep Pig, everyone's entertained.

**Phone:** 0870 060 1811

**Station:** Baker Street Tube

# OPEN AIR THEATRE

Come May the sun is well and truly shining but there are plenty of other reasons to be heading outdoors as, across London, parks and other open-air venues will be opening their gates to theatre-lovers. The annual open-air theatre season's two ever-present occasions are listed here but expect more to be confirmed closer to the time. Alfresco dramatics are the perfect start to an entertaining summer.

# May

14<sup>th</sup> May

## May Fayre and Puppet Festival

Covent Garden WC2

**Phone:** 020 7375 0441

**Station:** Covent Garden Tube

16<sup>th</sup> - 26<sup>th</sup> May

## Eric Clapton

Royal Albert Hall SW7

**Phone:** 020 7589 8212

**Station:** South Kensington Tube

18<sup>th</sup> May

## Westlife

Wembley Arena HA9

**Phone:** 020 7437 4370

**Station:** Wembley Stadium Rail

18<sup>th</sup> - 21<sup>st</sup> May

## Photo-London

Royal Academy of Art W1

**Phone:** 020 7839 9300

**Station:** Green Park Tube

27<sup>th</sup> May

## Rugby Union Premiership Final

Twickenham TW1

**Phone:** 0870 902 0000

**Station:** Twickenham Rail

Late May - Early June

## OneDotZero Film Festival

Institute of Contemp. Arts SW1

**Phone:** 020 7930 3647

**Station:** Piccadilly Circus Tube

11<sup>th</sup> May

## Cathcart

## Spring Proms

Royal Albert Hall SW7

**Phone:** 020 7589 8212

**Station:** South Kensington Tube

11<sup>th</sup> - 14<sup>th</sup> May

## Royal Windsor Horse Show

Windsor Castle SL4

**Phone:** 01753 860633

**Station:** Windsor Rail

11<sup>th</sup> - 15<sup>th</sup> May

## England vs Sri Lanka, 1<sup>st</sup> Test

Lord's NW8

**Phone:** 020 7616 8500

**Station:** St John's Wood Tube

13<sup>th</sup> May

## Santana

Wembley Arena HA9

**Phone:** 0870 060 0870

**Station:** Wembley Stadium Rail

13<sup>th</sup> May

## FA Cup Final

Wembley Stadium HA9

**Phone:** To be confirmed

**Station:** Wembley Stadium Rail



MAY 2006

Mon	Tue	Wed	Thu	Fri	Sat	Sun
01	02	03	04	05	06	07
08	09	10	11	12	13	14
15	16	17	18	19	20	21
22	23	24	25	26	27	28
29	30	31				

# SPORT

## FOOTBALL

Wembley, the Home of Football, will be reopening this year after a magnificent refurbishment. Fulham's charming riverside stadium offers your best chance of seeing Premiership football in London.

### Wembley Stadium

Empire Way HA9  
**Capacity:** 90,000  
**Station:** Wembley Stadium Rail

### Craven Cottage

Stevenage Road SW6  
**Capacity:** 21,000  
**Station:** Putney Bridge Tube

## CRICKET

Lord's is a beautiful, historic cricket ground, but England almost always lose there. Head down to the Oval if you want to see a victory for the home side.

### Lord's

St John's Wood NW8  
**Capacity:** 30,000  
**Station:** St. John's Wood Tube

### The Brit Oval

Kennington SE11  
**Capacity:** 23,500  
**Station:** Oval Tube

## TENNIS

Since the first Championships in 1877, Wimbledon has grown from its roots as a garden-party tournament to a Grand Slam competition with a global following of millions.

### The All-England Lawn Tennis Club

Wimbledon SW19  
**Capacity:** 35,500  
**Station:** Southfields Tube

## RUGBY

London's wealthiest suburb rings out every year to the England fans' rendition of 'Swing Low, Sweet Chariot'.

### Twickenham Stadium

Twickenham TW1  
**Capacity:** 80,000  
**Station:** Twickenham Rail

# jUNE

### 3<sup>rd</sup> June

#### Girls Aloud

Wembley Arena HA9  
**Phone:** 020 7437 4370  
**Station:** Wembley Park Tube

### 7<sup>th</sup> June - 3<sup>rd</sup> September

#### Rembrandt and Co

Dulwich Picture Gallery SE21  
**Phone:** 020 8693 5254  
**Station:** West Dulwich Rail

### 10<sup>th</sup> June

#### Trooping the Colour

The Mall W1  
**Phone:** 020 7414 2479  
**Station:** Piccadilly Circus Tube

### 12<sup>th</sup> June - 20<sup>th</sup> August

#### Royal Academy Summer Show

Royal Academy of Art W1  
**Phone:** 020 7839 9300  
**Station:** Green Park Tube

### 15<sup>th</sup> - 18<sup>th</sup> June

#### Taste of London

Regent's Park NW1  
**Phone:** 0870 906 3807  
**Station:** Baker Street Tube

### 28<sup>th</sup> June - 2<sup>nd</sup> July

#### Henley Royal Regatta

Henley-on-Thames RG9  
**Phone:** 01491 572 153  
**Station:** Henley-on-Thames Rail

### June - August

#### English Heritage Picnic Concerts

Kenwood House, Marble Hill House and Audley End  
**Phone:** 0870 333 1181  
**Station:** Various

### June - September

#### Watch This Space

National Theatre SE1  
**Phone:** 020 7452 3000  
**Station:** Waterloo Tube/Rail

### 11<sup>th</sup> June

#### Bon Jovi at Wembley Stadium

Wembley Stadium, Wembley HA9  
 Fingers crossed the new Wembley will be ready in time for the FA Cup final - New Jersey soft rockers Bon Jovi seem confident, having booked themselves in to play there just a few weeks later. The hordes of fans will be serenaded by Jon, Richie and the boys as they trawl through their 20-year back catalogue, no doubt whipping out classics like 'Bad Medicine', and 'Livin' on a Prayer'. Expect some classic lighter-in-air-moments at the brand new national stadium.  
**Phone:** 020 8795 9000  
**Station:** Wembley Stadium Rail/Wembley Park Tube



### A London Calendar 2006

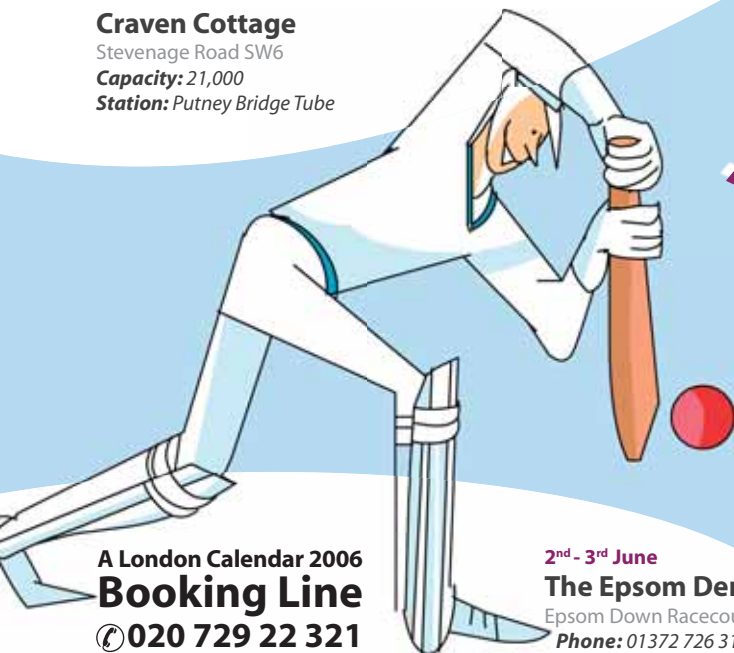
### Booking Line

☎ 020 729 22 321

### Hotels, Tickets and Tours

Open every day 8am to 11pm  
 English, Español, Français, Deutsch, Italiano

**LONDON TOWN**.com<sup>™</sup>  
 The London Experts<sup>™</sup>



# jULY



## Hyde Park and Kensington Gardens

Hyde Park W2  
Right in the middle of London, Hyde Park and little sister Kensington Gardens have everything from open space and art galleries, not to mention opportunities to swim in the lake or ride a horse.  
**Phone:** 020 7298 2100  
**Station:** Hyde Park Corner Tube

## St James's Park

Horse Guards Road SW1  
Stroll the pathways of London's oldest park, marvelling at the menagerie of ducks, swans, geese and pelicans. The view of Westminster from the bridge is stunning on a summer's eve.  
**Phone:** 020 7930 1793  
**Station:** St James's Park Tube

## Hampstead Heath

Hampstead Heath NW5  
The panorama of the city from Parliament Hill is literally only the tip of the iceberg, this wild expanse is littered with pretty ponds, open grassland and secluded copses.  
**Phone:** 020 7485 4491  
**Station:** Hampstead Heath Rail

## 6th June - 5th August

### Opera Holland Park

Holland Park W8  
Relax in the outdoors as the rousing tones of opera wash over the crowd. Six brand new productions will be accompanied by the compelling City of London Sinfonia.  
**Phone:** 020 7437 4370  
**Station:** Holland Park Tube

## 15th - 23rd July

### Rhythm Sticks Percussion Festival

Royal Festival Hall SE1  
The Royal Festival Hall festival of drumming and percussion brings the South Bank Centre to life, with the heartbeats of a dozen cultures resounding around its many performance spaces. Rhythm Sticks has grown into Europe's most prestigious drumming and percussion festival. For nine exhilarating days, the South Bank reverberates to grooves and beats

# OUTDOOR FUN



## 1st and 2nd July

### Sprite Urban Games

Clapham Common SW4  
Kick flips, wheelies, 720 bar spins – come and see the pros have a go at the year's biggest skate, BMX and motocross event. If these acrobatic antics don't grip you check out the break dancing or streetwear stalls.  
**Phone:** 020 8267 8055  
**Station:** Clapham Common Tube

## 15th July

### Rise Festival

Burgess Park SE5  
The most multicultural city in the world throws a massive free party in the name of diversity. Last year 80,000 revellers packed into the park to dance the afternoon away to the likes of Lemar and Horace Andy.  
**Phone:** 020 7983 6554  
**Station:** Kennington Tube

## July - August

### South Bank Beach

Jubilee Gardens, South Bank SE1  
Remember to pack your bucket and spade – this summer the South Bank will be transformed into a real beach. As well as enjoying the sunshine and playing in the sand you can enjoy a multitudinous blend of activities. A giant cinema screen will be showing films in the evening, as well as all the sporting events – including the World Cup! Soak up the holiday mood wandering through the café, amongst the yoga sessions, beach volley ball, free kids' activities and market stalls. Forget the hellish journeys to Brighton – the beach has finally come to London.  
**Phone:** 0870 380 4300  
**Station:** Embankment Tube

## 1st July

### Europride London 2006

Parade down Oxford Street.  
Rally in Trafalgar Square  
**Phone:** 020 7494 2225  
**Station:** Leicester Square Tube

## 2nd July

### The 10k London Run

Central London  
**Phone:** Online contact only  
**Station:** Piccadilly Circus Tube

## A London Calendar 2006 Booking Line

☎ 020 729 22 321  
Hotels, Tickets and Tours  
Open every day 8am to 11pm  
English, Español, Français, Deutsch, Italiano

**LONDONTOWN.com**  
The London Experts™

## 5th - 9th July

### Hampton Court Palace Flower Show

Hampton Court Palace KT8  
**Phone:** 020 7834 4333  
**Station:** Hampton Court Rail

## 5th July - 22nd October

### Angus McBean: Portraits

National Portrait Gallery, Charing Cross Road WC2  
**Phone:** 020 7312 2452  
**Station:** Leicester Square Tube

## 13th - 17th July

### England vs Pakistan, 1st Test

Lord's NW8  
**Phone:** 020 7616 8500  
**Station:** St John's Wood Tube

## 14th July - 9th September

### The Proms

Royal Albert Hall SW7  
**Phone:** 020 7589 8212  
**Station:** South Kensington Tube

## 20th - 30th July

### British International Motor Show

Excel Centre E18  
**Phone:** 020 7654 0600  
**Station:** Custom House DLR



## 22nd July

### Big Gay Out

Finsbury Park N4  
**Phone:** 01371 812 920  
**Station:** Finsbury Park Tube

## Weekends in July

### Mozart 2006

Barbican Centre  
**Phone:** 020 7638 8891  
**Station:** Barbican Tube



from all over the world. There's something for everyone, whether you're a percussion expert or whether you have never played a drum in your life. You can see the world's best in action or have a go yourself in one of the workshops. There are several events a day, and one of the best things to do is just turn up, follow the beats and discover world rhythms you'd never heard before.

**Phone:** 0870 401 8181  
**Station:** Waterloo Tube/Rail

**27<sup>th</sup> - 28<sup>th</sup> August**

## Notting Hill Carnival

Notting Hill, West London W1

Come and join in the fun at Europe's biggest street party, which started life as a small, local celebration by West London's homesick Caribbean community. Every year over a million people flock to the streets of Notting Hill to gaze at floats, shimmy to sound systems and soak up the true flavours of the Caribbean. Sunday is traditionally Children's Day, with the real party really kicking in on the Monday.

**Phone:** 0870 059 1111

**Station:** Notting Hill Gate Tube/  
Ladbroke Grove Tube

**1<sup>st</sup> - 5<sup>th</sup> August**

## CAMRA Great British Beer Festival 2

Earl's Court W14

**Phone:** 01727 867 201

**Station:** Earl's Court Tube

**1<sup>st</sup> - 20<sup>th</sup> August**

## Trafalgar Square Arts Festival

Trafalgar Square WC2

**Phone:** 020 7983 4100

**Station:** Charing Cross Road  
Tube/Rail

**5<sup>th</sup> - 6<sup>th</sup> August**

## The London Triathlon

Excel Centre E16

**Phone:** 020 7559 2929

**Station:** Custom House DLR

## A London Calendar 2006

## Booking Line

**020 729 22 321**

**Hotels, Tickets and Tours**

Open every day 8am to 11pm

English, Español, Français, Deutsch, Italiano

**LONDONTOWN.com**  
The London Experts

**12<sup>th</sup> August**

## London Mela

Gunnersbury Park W5

**Phone:** 020 8825 5000

**Station:** Gunnersbury Tube/Rail

**17<sup>th</sup> - 21<sup>st</sup> August**

## England vs Pakistan, 4<sup>th</sup> Test

The Brit Oval SE11

**Phone:** 020 7582 6660

**Station:** Oval

**19<sup>th</sup> - 20<sup>th</sup> August**

## V2006

Hylands Park, Essex CM2

**Phone:** 0870 060 3777

**Station:** Chelmsford Rail

**25<sup>th</sup> - 27<sup>th</sup> August**

## Reading Festival

Little John's Farm, Berks RG1

**Phone:** 0870 060 3777

**Station:** Reading Rail

**26<sup>th</sup> - 27<sup>th</sup> August**

## The Metro Weekender

Clapham Common SW4

**Phone:** 08700 600 100

**Station:** Clapham Common Tube

**26<sup>th</sup> - 27<sup>th</sup> August**

## TDK Cross Central Festival

King's Cross Goods Yard N1

**Phone:** 020 7833 8301

**Station:** King's Cross Tube/Rail

**Throughout August**

## Babe, the Sheep Pig

Open Air Theatre,  
Regent's Park NW1

Delightful adaptation of Dick King-Smith's time honoured tale. Written and directed by David Wood this is the crackling good story of the lovable little pig who learns how to herd sheep despite cynics, villains and very humble beginnings.

**Phone:** 08700 601 811

**Station:** Baker Street Tube

## Legoland

Winkfield Road, Windsor SL4

50 fun-filled attractions are on offer at this unbeatable universe of bricks designed to cater for the whole family.

**Phone:** 0870 507 0404

**Station:** Windsor & Eton  
Central Rail / Windsor & Eton  
Riverside Rail.

**5<sup>th</sup> August**

## The Wag and Bone Dog Show

Windsor Great Park, Windsor SL4

Breaking away from the traditional dog show mould, Wag and Bone promises a fun-packed day of innovative canine entertainment. Look out for Doggie Dancing and Pup Idol - it's a hoot.

**Phone:** 08702 72 73 74

**Station:** Windsor Rail

## Chessington World of Adventures

Chessington KT9

A fun-packed theme park aimed squarely at younger kids.

**Phone:** 0870 444 7777

**Station:** Chessington Rail

**8<sup>th</sup> November 2005 -  
26<sup>th</sup> August 2006**

## Myths and Legends

Livesey Museum for Children,  
682 Old Kent Road SE15

A fantastic hands-on exhibition hits one of London's most popular children's museums. Steal treasure from the Dragon's Lair, stalk a Minotaur within the caverns of a dark labyrinth or climb aboard a mythical ship. It's heaps of fun.

**Phone:** 020 7639 5604

**Station:** Elephant & Castle Tube

# NOTTING HILL CARNIVAL



KIDS  
SUMMER  
FUN

AUGUST

## Thorpe Park

Staines Road,  
Chertsey KT16

Ideal for families with teenagers, visitors can now brave more than 30 spine-tingling rides. Your young adrenalin junkies can plummet down enormous drops and rocket past upside down in this action-packed world of fun.

**Phone:** 0870 999 1717

**Station:** Staines Rail

## 18<sup>th</sup> August - 1<sup>st</sup> September Kids' Week

Theatres throughout London  
Excitable tots and teens descend upon Theatreland. Children aged 5-16 can see an awesome selection of dazzling West End hits for free and also participate in a raft of children's theatrical activities.

**Phone:** 0870 400 0800

**Station:** Various

9<sup>th</sup> September

## BBC Proms in the Park

Hyde Park W2

The eight-week summer season of orchestral concerts is held in high esteem the world over. It's been going since 1895 and its popularity hasn't diminished, admirably achieving its ambition of bringing classical music to the masses. The Last Night of the Proms is particularly famed - this concert is a lighter blend of classical greatest hits followed by some rousing patriotic renditions of Jerusalem and Rule Britannia. There are loads of standing room tickets available on the day, so if you are determined enough you'll get in. The tickets are as cheap as ever and there's no dress code, making this a wonderful, popular celebration of classical music.

**Phone:** 0870 899 8100

**Station:** Hyde Park Tube

1<sup>st</sup> - 3<sup>rd</sup> September

## His & Hers Lifestyle Show

Grand Hall, Olympia W14

**Phone:** 01423 569000

**Station:** Kensington Olympia Tube

2<sup>nd</sup> September

## Liberty

Trafalgar Square WC2

**Phone:** 020 7983 4100

**Station:** Leicester Square Tube

3<sup>rd</sup> September

## The Regent Street Festival

Regent Street WC2

**Phone:** 020 7152 5852

**Station:** Piccadilly Circus Tube

## A London Calendar 2006 Booking Line

☎ 020 729 22 321

**Hotels, Tickets and Tours**

Open every day 8am to 11pm

English, Español, Français, Deutsch, Italiano

**LONDON TOWN.com**  
The London Experts

10<sup>th</sup> September

## Brick Lane Festival

Brick Lane E2

**Phone:** 020 7364 7900

**Station:** Liverpool Street Tube/Rail

14<sup>th</sup> July - 9<sup>th</sup> September

## The Proms

Royal Albert Hall SW7

**Phone:** 020 7589 8212

**Station:** South Kensington

14<sup>th</sup> - 15<sup>th</sup> September

## Robbie Williams

Wembley Stadium HA9

**Phone:** To be confirmed

**Station:** Wembley Stadium Rail

14<sup>th</sup> September 2006 - 7<sup>th</sup> January 2007

## Leonardo Da Vinci: Experience, Experiment and Design

Victoria & Albert Museum SW7

**Phone:** 020 7942 2000

**Station:** South Kensington Tube

16<sup>th</sup> - 17<sup>th</sup> September

## London Open House

Buildings throughout London

**Phone:** 0900 1600 061

(60p per min)

**Station:** Various

September Weekend  
(To be confirmed)

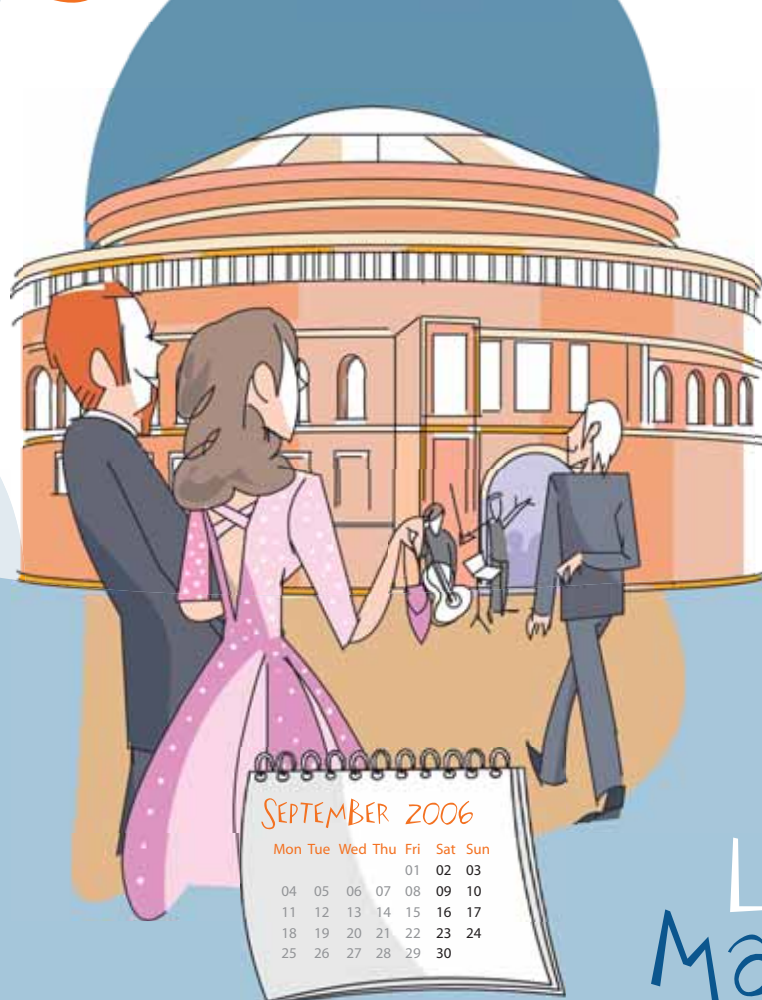
## The Mayor's Thames Festival

Embankment and South Bank

**Phone:** 020 7983 4100

**Station:** Embankment Tube

# SEPTEMBER



SEPTEMBER 2006

Mon	Tue	Wed	Thu	Fri	Sat	Sun
				01	02	03
04	05	06	07	08	09	10
11	12	13	14	15	16	17
18	19	20	21	22	23	24
25	26	27	28	29	30	

# LONDON MARKETS

London shopping is often synonymous with Oxford Street and the West End, but this is to unwisely disregard the city's wonderful, eclectic markets. Ferreting through clothes stalls, recovering unloved antiques or sampling mouth-watering pastries – the markets make shopping a fun day out. A worthy alternative to the tedium of the high street.

## Camden Market

**Best for:** Retro clothing, clubwear, crafts, furniture and antiques.

**Station:** Camden Town Tube / Chalk Farm Tube

## Portobello Road Market

**Best for:** Antiques, clothing.

**Station:** Notting Hill Gate Tube / Ladbroke Grove Tube

## Borough Market

**Best for:** Luxury and organic food.

**Station:** London Bridge Tube/Rail

## Petticoat Lane

**Best for:** Clothes.

**Station:** Liverpool Street Tube/Rail

## Old Spitalfields Market

**Best for:** Vintage and designer clothing, handmade furniture, interior goods, houseware.

**Station:** Liverpool Street Tube/Rail



# THE SOUND of Music

The beloved tale of the hapless nun sent to nanny the uptight offspring of Captain Von Trapp is set to hit the West-End. Theatre-lovers will be able to follow the trials and tribulations of the Von Trapp family, and novice nanny Maria, through love, familial bliss and across the Alps, escaping from the Nazis to Switzerland. The classic musical features countless timeless hits like Edelweiss and Climb Every Mountain which will have you desperate to sing along.

A London Calendar 2006  
**Booking Line**  
☎ 020 729 22 321  
**Hotels, Tickets and Tours**  
Open every day 8am to 11pm  
English, Español, Français, Deutsch, Italiano

**LONDONTOWN.com™**  
The London Experts™

**October - 18<sup>th</sup> March**  
**Happy Birthday Miffy**  
Museum of Childhood E2  
**Phone:** 020 8983 5200  
**Station:** Bethnal Green Tube

**3<sup>rd</sup> - 28<sup>th</sup> October**  
**Little Britain Live**  
Hammersmith Apollo W6  
**Phone:** 08700 11 2626  
**Station:** Hammersmith Tube

**5<sup>th</sup> October - 6<sup>th</sup> January**  
**The Renaissance at Home**  
Victoria & Albert Museum SW7  
**Phone:** 020 7942 2000  
**Station:** South Kensington Tube

# OCTOBER



OCTOBER 2006						
Mon	Tue	Wed	Thu	Fri	Sat	Sun
						01
02	03	04	05	06	07	08
09	10	11	12	13	14	15
16	17	18	19	20	21	22
23	24	25	26	27	28	29
30	31					

# HALLOWEEN



## Jack the Ripper Coach and Walking Tours

The trail of London's most notorious serial killer winds a bloody trail through the centuries and the East End. You can follow too.  
**Phone:** 020 7437 4370

## Sinister London Coach Tour

Back-Roads Touring Company escort fright-seekers around the sinister streets of the East and the Docklands.  
**Phone:** 020 7437 4370

## Garlic and Shots

14 Frith Street W1D  
London's only vampire-proof bar. Everything it serves is either covered in garlic or comes in a shot glass and often involves both.  
**Phone:** 020 7734 9505  
**Station:** Tottenham Court Road Tube

## The Devonshire Arms

33 Kentish Town Road NW1  
There's no better place to celebrate the night in true Gothic style than Camden's sinister Devonshire Arms. No effort, no entry.  
**Phone:** 020 7284 0562  
**Station:** Camden Town Tube

## Angels Fancy Dress Shop

119 Shaftesbury Avenue WC2H  
Whether you want to be a headless horseman or Freddy Kruger, this is a great place for all your fright-night needs.  
**Phone:** 020 7836 5678  
**Station:** Leicester Square Tube

**21<sup>st</sup> October**  
**Diwali Celebrations**  
Trafalgar Square WC2  
**Phone:** 020 7983 4100  
**Station:** Leicester Square Tube

**Opens 21<sup>st</sup> October**  
**Wildlife Photographer of the Year**  
Natural History Museum SW7  
**Phone:** 020 7942 5000  
**Station:** South Kensington Tube

**29<sup>th</sup> October**  
**The London Teddy Bear Fair**  
Alexandra Palace N22  
**Phone:** 01778 391123  
**Station:** Wood Green Tube

## The London Dungeon

28-34 Tooley Street SE1  
Torture, beheading, plague and murder are the main attractions at this museum of the darkest parts of British history.  
**Phone:** 020 7403 7221  
**Station:** London Bridge Tube/Rail

## The Blood and Tears Walk

Here's a chance to check out the dark side of London with a walking tour that takes in Jack the Ripper, witchcraft and grave robbers.  
**Phone:** 020 7437 4370

**11<sup>th</sup> - 15<sup>th</sup> October**  
**The Ski and Snowboard Show**  
Olympia W14  
**Phone:** 08705 90 00 90  
**Station:** Olympia Tube/Rail

**12<sup>th</sup> October - 21<sup>st</sup> January**  
**David Hockney Portraits**  
National Portrait Gallery WC2  
**Phone:** 020 7306 0055  
**Station:** Charing Cross Tube/Rail

**18<sup>th</sup> October - 14<sup>th</sup> January**  
**Velazquez**  
National Gallery WC2  
**Phone:** 020 7747 2423  
**Station:** Leicester Square Tube

**18<sup>th</sup> October - 2<sup>nd</sup> November**  
**The London Film Festival**  
National Film Theatre and cinemas throughout London  
**Phone:** 020 7928 3535  
**Station:** Waterloo Tube/Rail

**1<sup>st</sup> - 5<sup>th</sup> November**

### The Spirit of Christmas

Olympia W14

**Phone:** 0870 121 2525

**Station:** Olympia Tube/Rail

**5<sup>th</sup> November**

### London to Brighton Veteran Car Run

Starts Hyde Park SW1

**Phone:** To be confirmed

**Station:** Hyde Park Corner Tube

**7<sup>th</sup> - 9<sup>th</sup> November**

### Cliff Richard

Wembley Arena HA9

**Phone:** 020 7437 4370

**Station:** Wembley Central

**Tube/Rail**

**10<sup>th</sup> - 19<sup>th</sup> November**

### London Jazz Festival

Royal Festival Hall and venues throughout London

**Phone:** 020 7405 9900

**Station:** Waterloo Tube/Rail

**11<sup>th</sup> November**

### The Lord Mayor's Show

City of London

**Phone:** 020 7606 3030

**Station:** Mansion House Tube

**11<sup>th</sup> - 12<sup>th</sup> November**

### Discover Dogs

Earl's Court SW5

**Phone:** 0870 606 6750

**Station:** Earl's Court Tube

**12<sup>th</sup> November**

### Royal British Legion Festival of Remembrance

Royal Albert Hall SW7

**Phone:** 020 7589 8212

**Station:** South Kensington Tube

**17<sup>th</sup> - 19<sup>th</sup> November**

### Erotica

Olympia W14

**Phone:** 01708 768 000

**Station:** Olympia Tube/Rail



# NOVEMBER

### Battersea Park

Battersea Park SW1

Battersea Park's beautiful riverside setting hosts the biggest and best pyrotechnic display south of the river.

**Phone:** 020 8871 6363

**Station:** Sloane Square Tube

### Wandsworth Park

Putney Bridge Road SW18

Enjoy a sparkling night at this well organized community fireworks display just by Putney Bridge.

**Phone:** 020 8871 6363

**Station:** Putney Bridge Tube

### A London Calendar 2006 Booking Line

☎ 020 729 22 321

**Hotels, Tickets and Tours**

Open every day 8am to 11pm

English, Español, Français, Deutsch, Italiano

**LONDONTOWN.com**  
The London Experts

### Clapham Common Fireworks Display

Clapham Common SW4

Lambeth's premier fireworks display takes place on the wide green expanse of Clapham Common.

**Phone:** 020 7926 6212

**Station:** Clapham Common

**Tube / Clapham High Street Rail**

### Alexandra Palace Fireworks Display

Alexandra Palace N22

London's foremost fireworks display takes place at this well-known landmark affectionately referred to as "The People's Palace".

**Phone:** 020 8365 2121

**Station:** Wood Green Tube

### Wimbledon Park

Home Park Road SW19

Head down to the home of tennis, for an explosive display of fireworks far from the city centre.

**Phone:** 020 8545 3235

**Station:** Wimbledon Park Tube

### Streatham Common

Streatham Common South SW16

Catch the south London vibe at this fantastic fireworks event, replete with fun fair and refreshments galore.

**Phone:** 020 7926 1000

**Station:** Streatham Rail

### Brighton Racecourse

Freshfield Road, Brighton, East Sussex BN2

Travel down to the South Coast's number one seaside resort to experience fireworks with the sea breeze in your face.

**Phone:** 01273 603 580

**Station:** Brighton Rail

### Ravenscourt Park

Ravenscourt Park W6

The park is a superb space, and there's a truly huge bonfire to warm the crowds before a spectacular show.

**Phone:** 020 7736 3854

**Station:** Ravenscourt Park Tube

### Bishop's Park

Stevenage Road SW6

This Fulham fiesta is a perfect event to enjoy the excitement of fireworks night without the pressures of the big crowds.

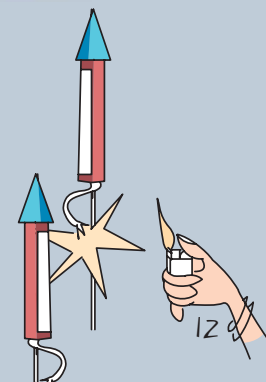
**Phone:** 020 8748 3020

**Station:** Fulham Broadway Tube

# fireWORKS

Every year there are massive celebrations to commemorate the failure of the 1605 Gunpowder Plot. Catholic Guy Fawkes attempted to blow up the Houses of Parliament and the King, James I, along with it. He was executed for treason, but he's remembered by children the length and breadth of the country as they burn effigies of the infamous traitor on large bonfires, as fireworks are fired off into the night's sky.

It all sounds a bit gruesome but these days it's all in the name of fun. Across London there are scores of municipal displays as well as numerous private parties. Huge crowds gather as thousands of pounds worth of pyrotechnics go up in smoke. Not only is Bonfire Night a spectacular occasion which kids adore, but it gives you a chance to get outside, grab a glass of mulled wine and gaze into the skies with the rest of London.



# CHRISTMAS LIGHTS

Christmas wouldn't be the same without the colourful strings of angels, bells, holly and other yuletide symbols sparkling charmingly over our heads. Each Christmas London's streets are festooned with a glittering assortment of lights to illuminate our path during the festive period.

As well as the luminous carnival up above - Christmas ushers in the hordes of shoppers trying to find the perfect gift, flocks of rosy-cheeked carol singers, as well as some red-nosed merry makers.

Bond Street is closed off for a street party to celebrate the start of the Christmas period, crowds gather around the giant Christmas tree in Trafalgar Square to belt out carols, even the London Eye is draped in a palette of festive colour. Christmas in London is an all singing, all twinkling affair.

**A London Calendar 2006  
Booking Line**  
☎ 020 729 22 321  
**Hotels, Tickets and Tours**  
Open every day 8am to 11pm  
English, Español, Français, Deutsch, Italiano

**LONDONTOWN.com™**  
The London Experts™

**7<sup>th</sup> - 10<sup>th</sup> December**  
**East London Design Shows**  
Shoreditch Town Hall E1  
**Phone:** 020 8510 9069  
**Station:** Old Street Tube

**8<sup>th</sup> - 10<sup>th</sup> December**  
**London Christmas Gift Show**  
Alexandra Palace N22  
**Phone:** 01703 549 623  
**Station:** Wood Green Tube

**11<sup>th</sup> - 20<sup>th</sup> December**  
**Spitalfields Winter Festival**  
Various venues across East London  
**Phone:** 020 7377 1362  
**Station:** Liverpool Street Tube/Rail

**15<sup>th</sup> - 17<sup>th</sup> December**  
**Festive BBC Good Food Show**  
Earl's Court, London SW5  
**Phone:** 0870 161 2148  
**Station:** Earl's Court Tube

**25<sup>th</sup> December**  
**Peter Pan Cup Swimming Race**  
Serpentine Lake, Hyde Park W2  
**Station:** Knightsbridge Tube

**24<sup>th</sup> December**  
**Midnight Mass at Westminster Abbey**  
Westminster Abbey, Parliament Square SW1  
**Phone:** 020 7377 1362  
**Station:** Westminster Tube

**The Great Christmas Pudding Race 2006**  
Covent Garden Piazza, Covent Garden WC2E  
**Phone:** 020 7121 6607  
**Station:** Covent Garden Tube

**Osterley Park Carols**  
Isleworth, Middlesex TW7  
**Phone:** 020 8232 5050  
**Station:** Osterley Tube

**Christmas Carol Sing-Along 2006**  
Royal Albert Hall, Kensington Gore SW7  
**Phone:** 020 7589 8212  
**Station:** South Kensington Tube

**Carol Concerts at Ham House**  
Richmond Riverside TW10  
**Phone:** 01494 755 572  
**Station:** Twickenham Rail



# DECEMBER

**The Natural History Museum Ice Rink**  
Cromwell Road SW7  
Hosted in the beautiful gardens, the 1000 square metre rink sits at the foot of the museum's soaring Romanesque building.  
**Phone:** 0870 060 1780  
**Station:** South Kensington Tube

**Hampton Court Palace Ice Rink**  
East Molesey KT8  
Step back in time, strap on some skates and venture on to the ice, Tudor style. The striking façade of Hampton Court Palace makes for a very unique backdrop.  
**Phone:** 0870 060 1778  
**Station:** Hampton Court Rail

**Tower of London Ice Rink**  
Tower Hill EC3N  
Nestled in the rounded hollow of the Tower's dry moat, the ice rink area is set to be a wonderfully festive scene.  
**Phone:** 0870 602 1100  
**Station:** Tower Hill Tube

**Somerset House Ice Rink**  
The Strand WC2R  
Festive folk can once again take to the ice in the magnificent courtyard of Somerset House.  
**Phone:** 020 7845 4600  
**Station:** Temple Tube

**Kew Gardens Ice Rink**  
Richmond TW9  
Redolent of Victorian times, there is something particularly fresh and wholesome about skating in the gardens. On a crisp winter's day Kew sparkles.  
**Phone:** 020 8332 5655  
**Station:** Kew Gardens Tube / Rail



# ICE SKATING

